



Welcome...

Alternatives Public Workshop

Midway Road/County Road 712 Project Development and Environment Study from Glades Cut Off Road to Selvitz Road

St. Lucie County

FPID: 231440-3-22-01

ETDM: 14177

June 28, 2016

Presentation Agenda

- Purpose of the workshop
- PD&E Study objectives
- Project location
- Project need
- Public involvement
- Engineering
- Environmental
- Environmental reports
- Project schedule
- What's next
- How can you get involved?



Purpose of the Workshop

- Introduce the project
- Explain the alternatives considered
- Provide information about these alternatives
 - Engineering
 - Environmental
- Present the process and schedule
- Receive input from community and stakeholders
 - Questions and concerns
 - Comment forms
 - Website: www.midwayrd.com



FDOT

COMMENT FORM
Alternatives Workshop

County Road (CR) 712 from Glades Cut Off Road to Selvitz Road in St. Lucie County, Florida
Financial Project Identification Number: 231440-3-22-01
ETDM Number: 14177
www.MidwayRd.com

Havert L. Fenn Center, 2000 Virginia Avenue, Fort Pierce, Florida 34982

Tuesday, June 28, 2016 from 5 p.m. to 7:30 p.m.

Please provide your comments below. If more space is needed, please use an additional sheet of paper. You may place your comments in the "comment box" provided at the meeting, or send to July Jimenez, P.E., FDOT Project Manager, at the address on the bottom or by email at jimenez@dot.state.fl.us. Please forward all comments by July 8, 2016.

Name _____
Address _____
City, State, Zip _____
Phone Number _____
Email _____

Mail to:
July Jimenez, P.E.
FDOT Project Manager
Florida Department of Transportation
3400 West Commercial Boulevard
Fort Lauderdale, Florida 33309

* This document is subject to public record laws and may be released to the media or public upon request.

Project Development & Environment (PD&E) Study

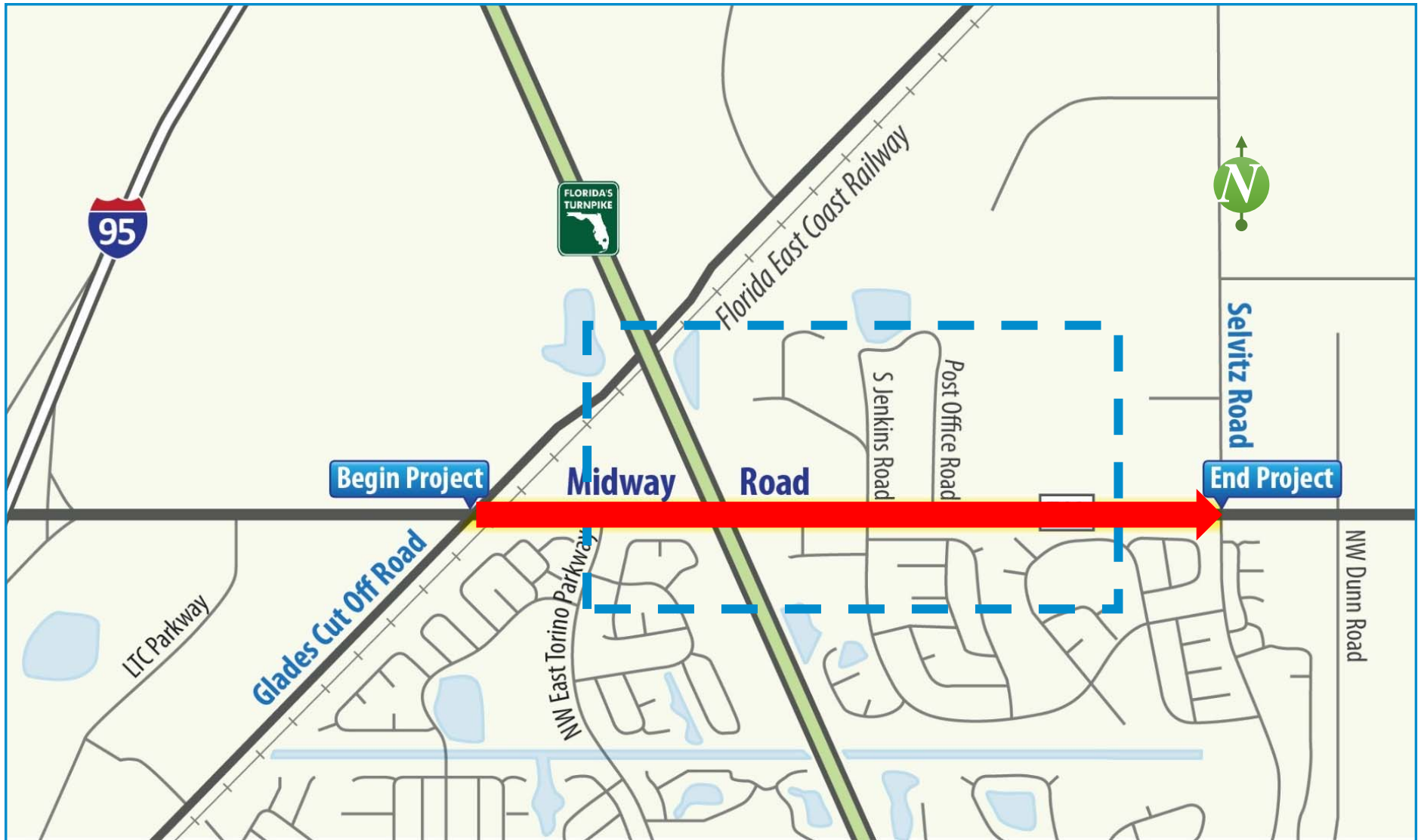
The objectives of this PD&E Study:

- Social
- Environmental
- Engineering Studies

*...concerning “if” and “where”
improvements should be built...*

- National Environmental Policy Act (NEPA)
- St. Lucie County

Project Location



Project Need



- Provide for existing and future traffic demands
- Improve safety
- Provide opportunities for pedestrian, bicycle, and transit facilities
- Improve freight mobility
- Enhance emergency evacuation
- Plan consistency



PD&E Study Components



- Data collection
- Engineering
- Environmental
- Public involvement

Public Involvement

- Elected and appointed officials/agencies Kick-off meeting was held August 18, 2015
- Public Kick-off meeting was held August 18, 2015
- **Alternatives public meeting is being held today**
- Public hearing is scheduled for 1st quarter 2017
- Project website
 - www.midwayrd.com
- Newsletters
- Local outreach

Florida Department of Transportation
District Four

MIDWAY ROAD/CR 712
From Glades Cut Off Road to Selvitz Road
FDOT No. 231440-2-22-01 and 2016 No. 14177
PROJECT DEVELOPMENT AND ENVIRONMENT (PDE) STUDY

Newsletter No. 2 Page 2 June 2016

How Can You Get Involved?
There is no need to wait until a public meeting to provide your input. Public comments and questions are welcomed at any time throughout the study. Please see our contact information in the column to the right. We are available for small group meetings with your neighborhood or special interest group.

Alternatives Public Workshop
An Alternatives Public Workshop has been scheduled to present the alternatives that have been developed to meet the project need, provide an opportunity to discuss the social, environmental, and economic effects of the various alternatives and obtain input from local officials, agencies and its employees.
The workshop will be held in an informal, open house format. A listening presentation will be available throughout the meeting. FDOT staff and consultant staff members will be available at the workshop to discuss the project and answer questions.
Date: Tuesday, June 28, 2016
Time: 5 p.m. to 7:30 p.m.
Location: Fort Lauderdale Civic Center
Address: 2000 W. Olive Avenue, Fort Lauderdale, Florida 33309

Why Do We Need This Study?
The West St. Lutz/Port Pierce area has been identified by the US Census as one of the fastest growing metropolitan areas in Florida. This rapid population growth has resulted in a significant increase in surface transportation. Based on recent traffic data from St. Lucie County, Midway Road/County Road 712 between Glades Cut Off and Selvitz Road does not adequately handle the existing traffic demand. In addition, the County anticipates continued growth and significant new development within and around the project area. Without roadway improvements, the traffic operations along this corridor will continue to deteriorate.

Contact Information:
For more information about the project or to schedule a group meeting, please contact one of us:
July Jimenez, P.E.
Project Manager, FDOT - District Four
3400 W. Commercial Boulevard
Fort Lauderdale, Florida 33309
Phone: (954) 777-4415
July.Jimenez@dot.state.fl.us

Project Schedules

Year	2015	2016	2017
Project Initiation	May		
Environmental & Engineering Plans	Aug		
Alternatives Public Workshop		June	
Draft Environmental & Engineering Documents		July	
Final Environmental & Engineering Documents			Oct
Public Hearing			Jan
Construction Start			Apr

Community Outreach
A comprehensive community outreach program is integrated into every step of the project to ensure that all stakeholders are notified and encouraged to participate. The outreach program will include a variety of public and other interested parties have meaningful participation in the process.

Public Notice
Public participation is notified without regard to race, color, sex, marital status, age, sex, religion, disability, or family status. Persons who require special accommodations under the Americans with Disabilities Act, or persons who require translation services (free of charge), should contact July Jimenez, P.E., FDOT Project Manager by phone at (954) 777-4415 or by email at julijimenez@dot.state.fl.us at least seven days prior to the meeting. If you are hearing or speech impaired, please contact us by using the Florida Relay Service, 1-800-955-8771 (TDD) or 1-800-955-8770 (voice).

Connect with the Midway Road/CR 712 PDE Study by visiting the website at www.midwayrd.com

Florida Department of Transportation
E-Updates | FL511 | Mobile | Site Map

Home About FDOT Contact Us Maps & Data Offices Performance Projects

Midway Road Project
Development and Environment (PDE) Study

District Office
Gary O'Reilly
District Four Secretary

3400 W Commercial Blvd
Fort Lauderdale, FL 33309

Tel: 954-777-4091
Fax: 954-777-4191

Additional Contacts
Staff Directory

Welcome
The Florida Department of Transportation (FDOT) District Four is conducting a Project Development and Environment (PDE) study of a 1.8 mile segment of Midway Road/CR 712 from Glades Cut Off Road to Selvitz Road in St. Lucie County. The project limits are shown on the location map below. The study evaluates upgrading the existing two-lane road to a four-lane divided road to handle future expected traffic. The study also considers ways to improve safety and allow opportunities for pedestrian, bicycle, and transit facilities.
Click on the various pages of this website for information about the PDE study process, future public involvement meetings, the project schedule, and information on how to contact FDOT's project manager.

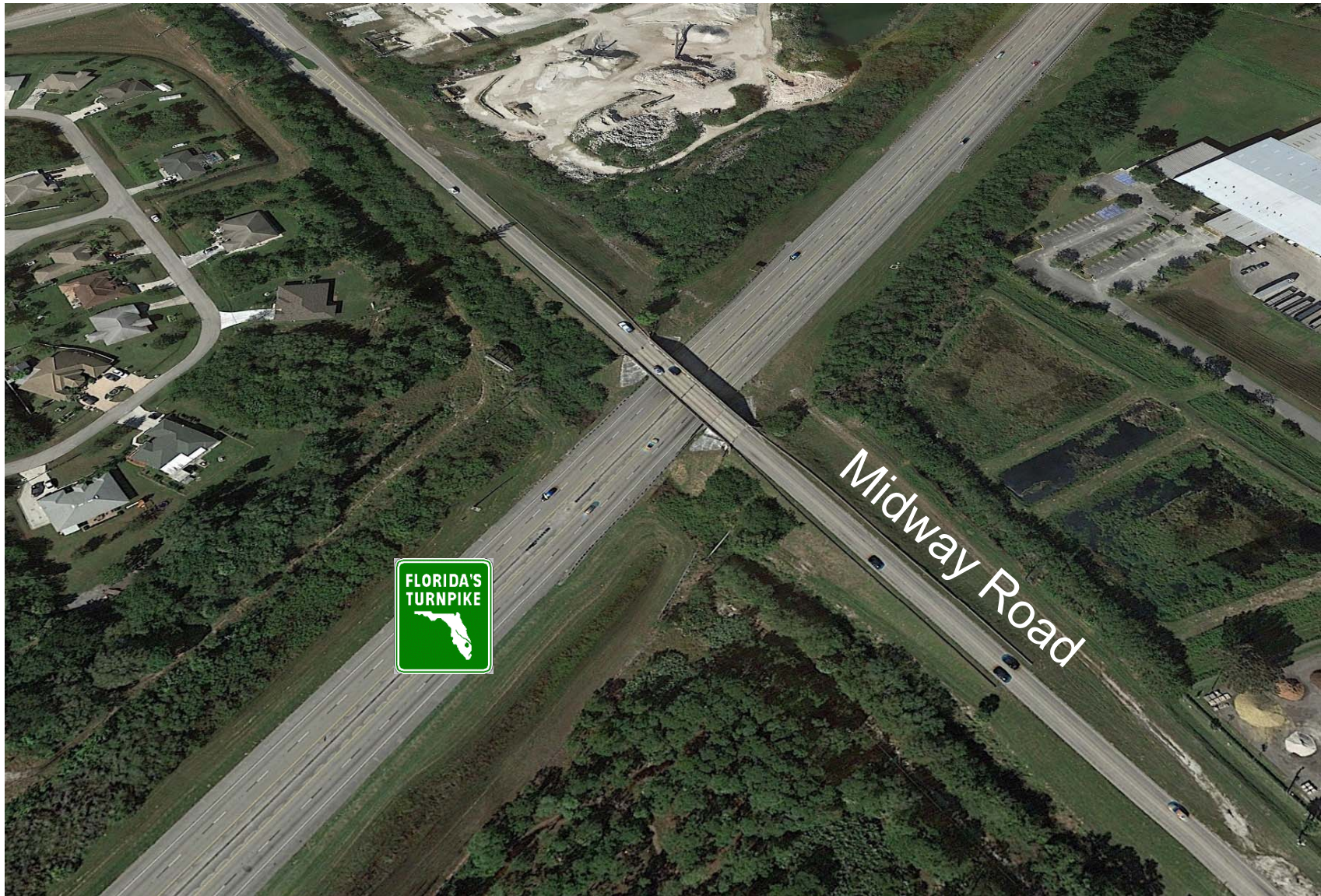
Study At-A-Glance

District Four
Start Date
May 2015
Estimated Completion Date
April 2017
Cost
TBD

511 TRAFFIC INFO



Interchange Feasibility Analysis



Traffic Data

- Existing Midway Road does not handle existing traffic demand
- Traffic anticipated to increase to 29,200 Annual Average Daily Traffic (AADT)
- Level of Service (LOS) F with degraded traffic operation unless capacity is increased



Alternatives Considered



- Meet future travel demands
 - Input from:
 - General public
 - Local governments and environmental agencies.
 - Comparison criteria
 - Community and environmental impacts
 - Costs
-
- No-build alternative
 - Transportation Systems Management and Operations
 - Multi-modal alternatives
 - Build alternatives

No-Build Alternative



- No improvements other than routine maintenance



Transportation Systems Management and Operations (TSMO)



- Alternatives to maximize utilization of existing roadway
 - Traffic signal and intersection improvements
 - Access management changes
 - Transit improvements
- Stand-alone TSMO improvements do not meet the purpose and need for the project
- TSMO improvements will be incorporated into the build alternatives

Multi-Modal Alternatives

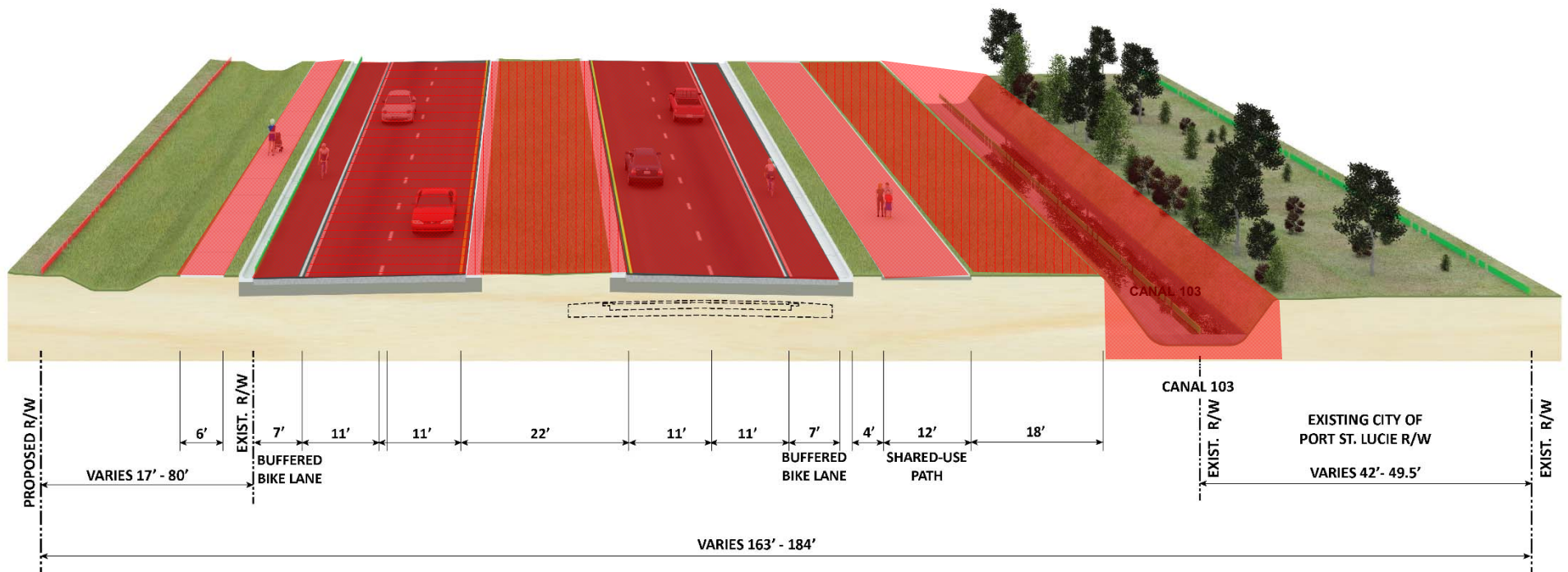
- Consists of additions to multi-modal (bus) services along corridor
- Multi-modal improvements alone do not meet the purpose and need for the project
- St. Lucie County's 2015-2024 Transit Development Plan Major Update identifies a new fixed route along Midway Road within the project limits
- Planned bus stops:
 - Eastbound: west of Milner Drive
 - Westbound: west of Selvitz Road
 - Westbound: west of New Horizons



Alternatives Analysis



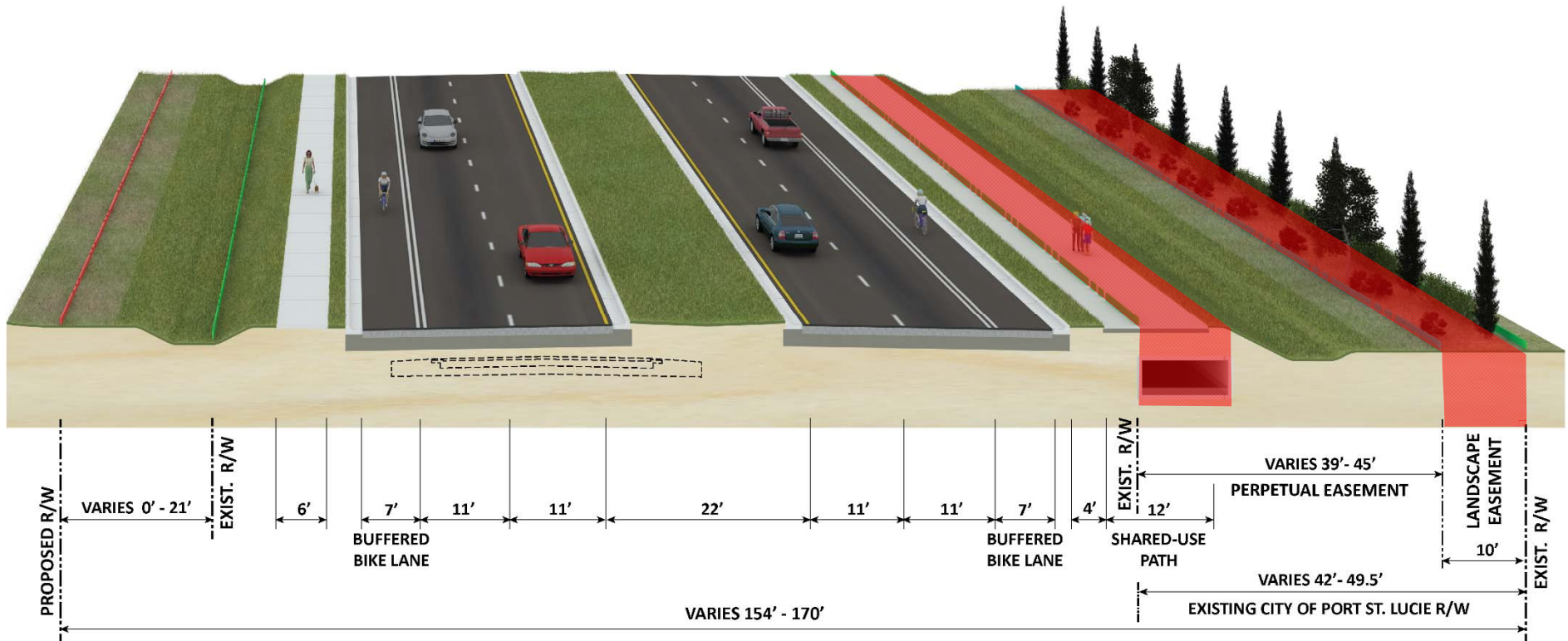
- Alternative 1 – Canal Avoidance



Alternatives Analysis



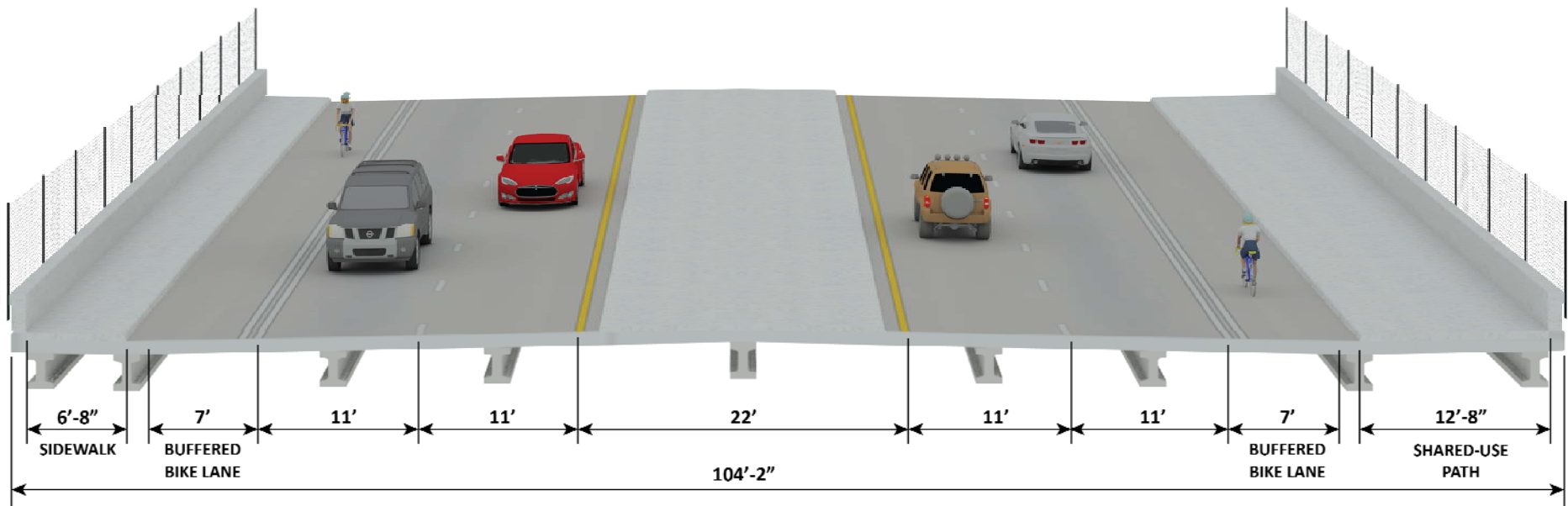
- Alternative 2 – Canal in Box Culvert



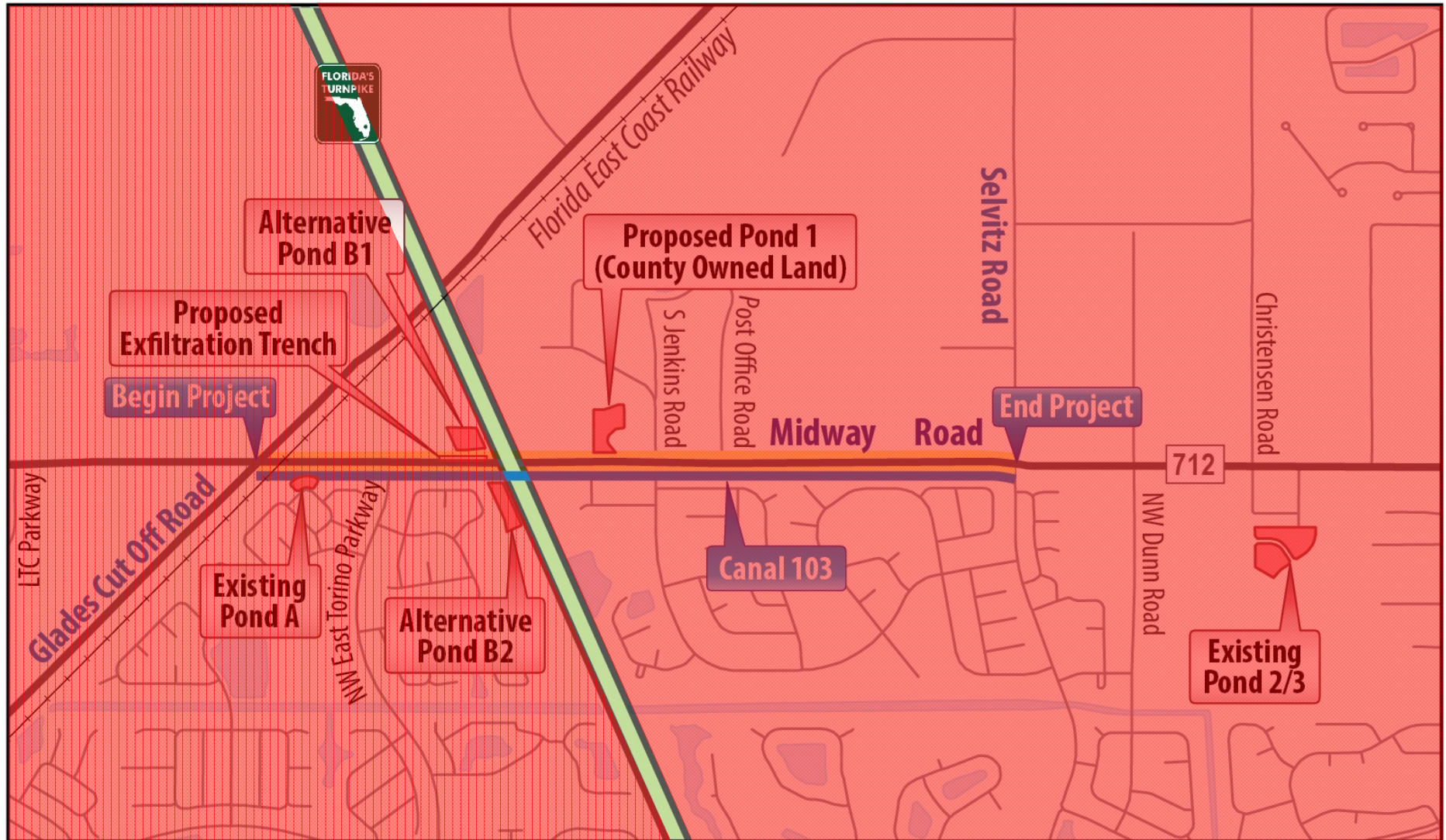
Alternatives Analysis



- Bridge over Turnpike



Stormwater Treatment Ponds



Interchange Feasibility Analysis

- Interchange Concept Study completed in 2005
 - No fatal flaws: No insurmountable technical issues
 - Expected revenue covered operation and maintenance but not construction costs
- New feasibility analysis
 - No fatal flaws
 - Updated traffic analysis
 - New alternatives considered
- Next steps
 - Interchange PD&E Study



Environmental



- Social and cultural environment
- Natural environment
- Physical environment

Social and Cultural Impacts

- Socio-economic Effects

- Land use changes
- Community cohesion
- Right-of-way
- Business and Residential Relocations
- Economic
- Mobility
- Aesthetics

- Cultural Resources

- Cultural Resource Assessment Survey (CRAS) complete
 - Results: The **FEC Railroad** considered eligible for listing on the ***National Register of Historic Places***



Section 4(f) Resources



- Potential Section 4(f) resources
 - Publically owned parks and recreation lands
 - Wildlife and waterfowl refuges
 - Historic sites
- Determination of Applicability (DOA)
 - Ongoing
 - FEC Railroad is NHRP eligible and will be evaluated for a “de minimis” use under Section 4(f)

Natural Effects

- Wetlands and surface waters
 - Roadside ditches
 - Canal 103
 - Ponds
 - Freshwater marsh
- Evaluate alternatives to avoid and minimize adverse effects
- Unavoidable impacts will be mitigated



Natural Effects – Wildlife and Habitat



- Endangered Species Biological Assessment (ESBA)
 - Evaluation is ongoing
- Following species being evaluated:



- West Indian Manatee
- Sherman's Fox Squirrel
- Audubon's Crested Caracara
- Wood Stork
- Florida Scrub-Jay
- Red-cockaded Woodpecker
- Everglades Snail Kite
- Bald Eagle
- American Alligator
- Eastern Indigo Snake
- Gopher Tortoise
- Florida Pine Snake
- Several listed plant species

Physical Effects



- Physical Environment
 - Pedestrian and bicycle facilities
 - Contamination
 - Air
 - Noise
 - Construction
- Noise Study is underway
 - Future traffic noise levels
 - Ongoing
- Contamination Screening Evaluation
 - Two sites – High potential
 - One site - medium potential
 - The locations of these sites are shown on the display graphics

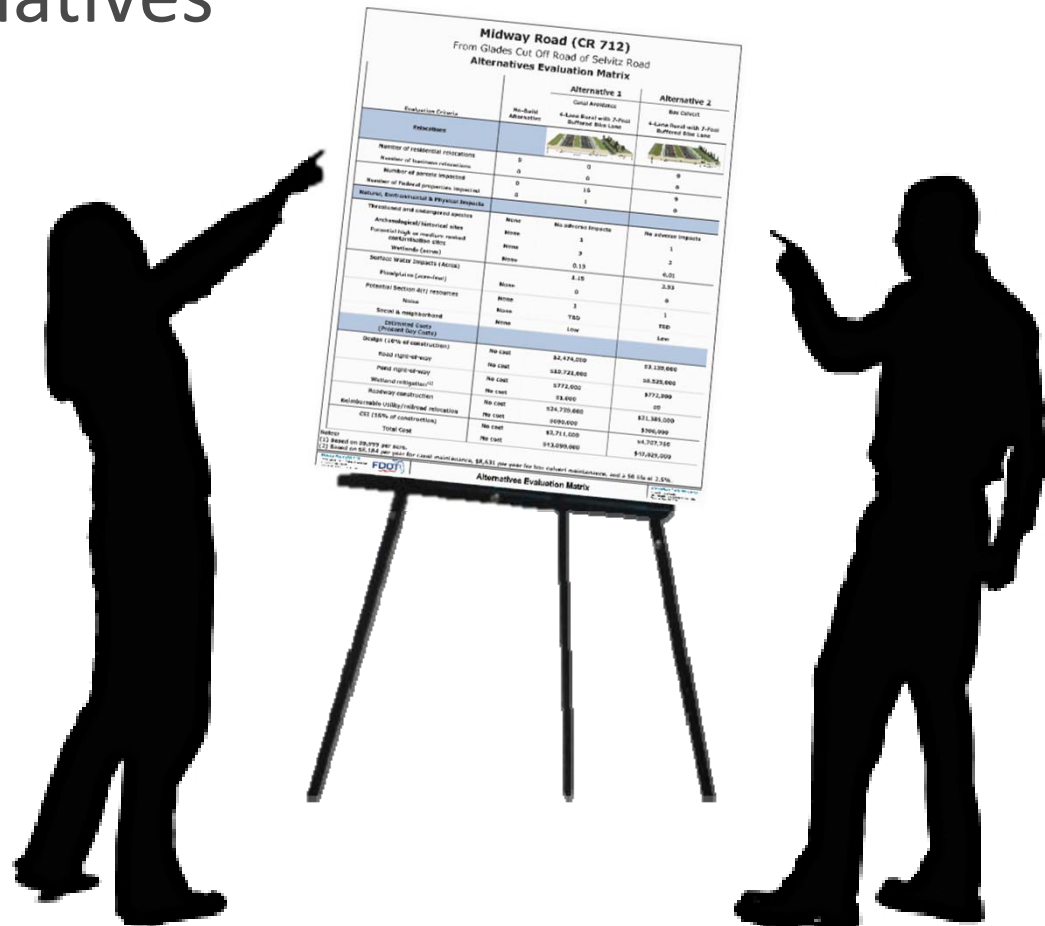
Environmental Reports



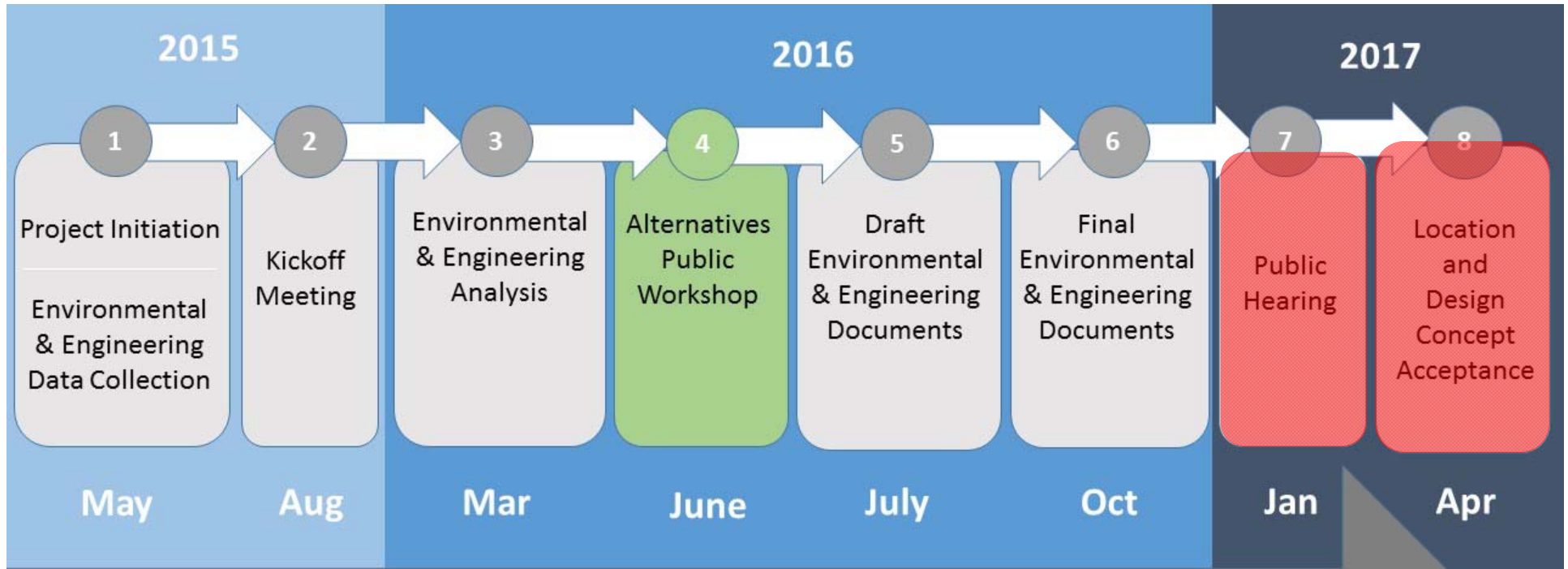
- Wetland Evaluation
- Endangered Species Biological Assessment
- Cultural Resources Assessment Survey
- Contamination Screening Evaluation
- Air Quality Screening
- Noise Study Report
- Type 2 Categorical Exclusion
- Section 4(f) DOA
- De Minimis Section 4(f)

Matrix Evaluation

- Compares alternatives
 - No-build
 - Alternative 1
 - Alternative 2
- Matrix is on display for your review



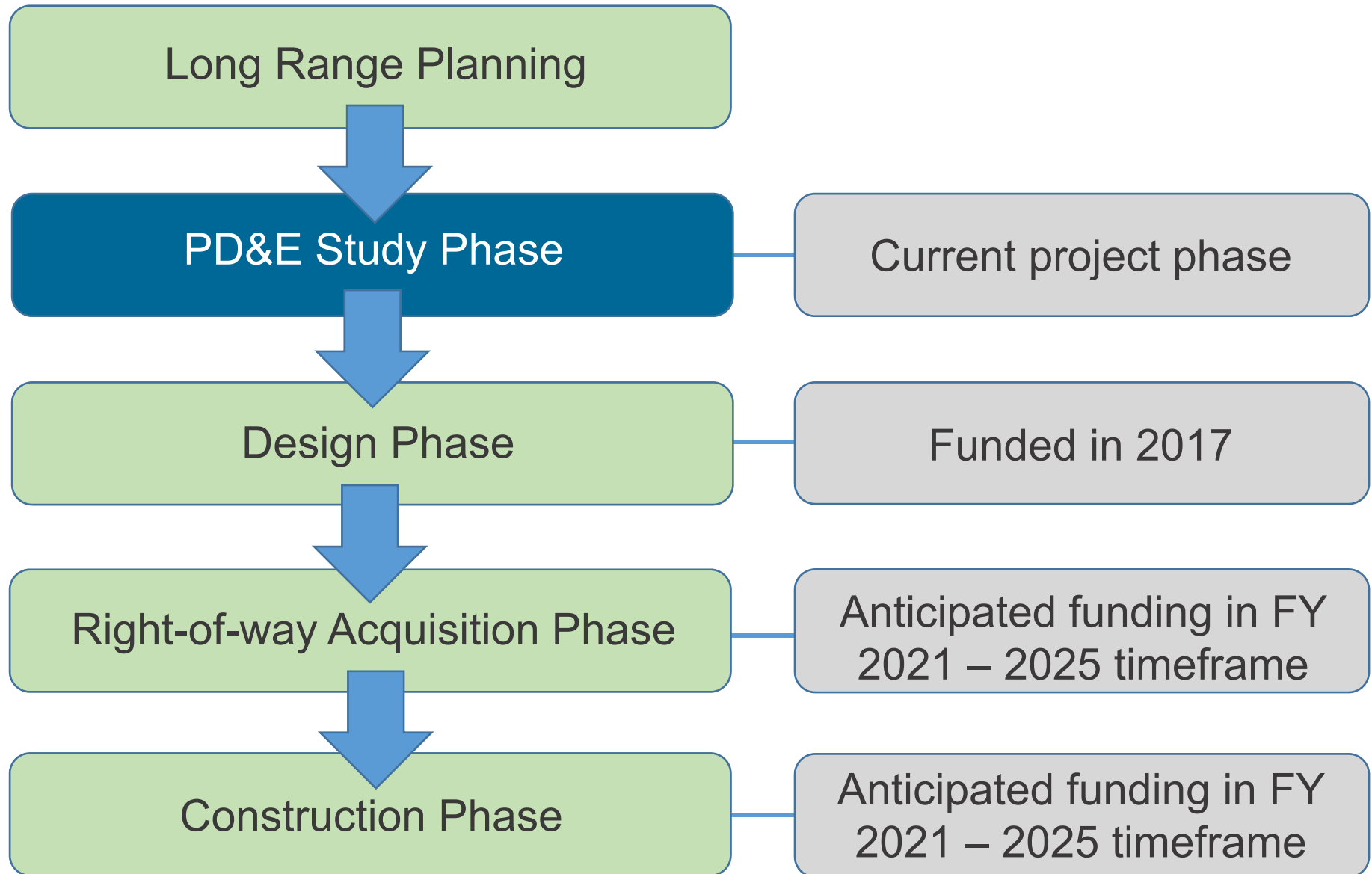
Project Schedule



Community Outreach

A continuous community outreach process is integrated into every step of the project to ensure that the corridor residents, businesses, the traveling public and other interested parties have meaningful participation in the process.

Project Implementation



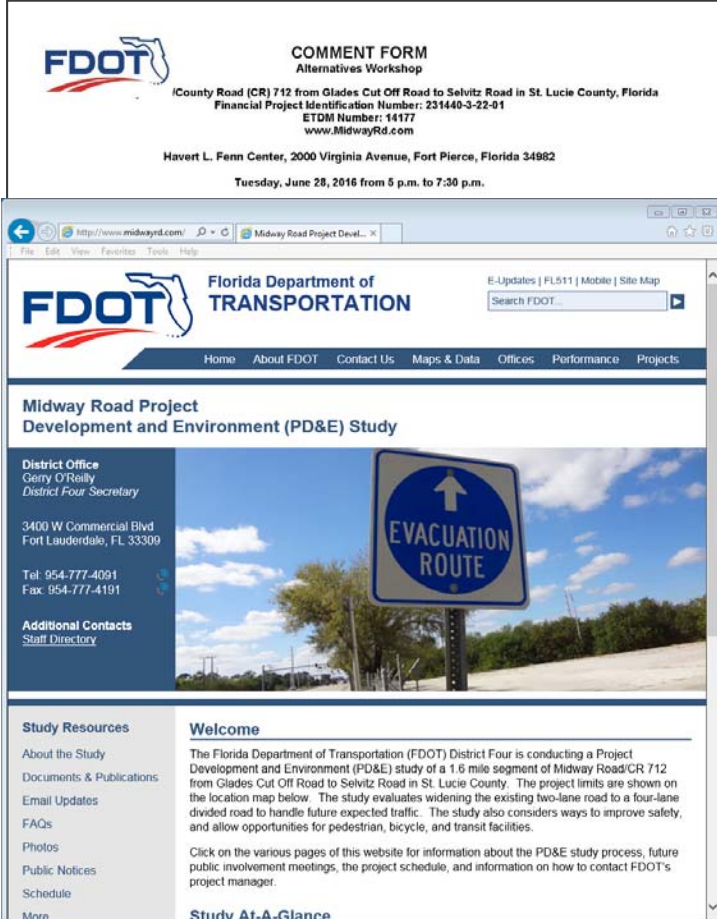
What's Next?



- Work Toward the Public hearing
 - Prepare study documents
 - Select preferred alternative to be presented
- Continuous Public Involvement
 - St. Lucie County
 - City of Fort Pierce
 - City of Port St. Lucie
 - St. Lucie County Transportation Planning Organization
 - Property owners, agencies, stakeholders
 - Project team available for presentations

How Can You Get Involved?

- Comment forms
 - Place in comment box tonight
 - Mail your comments
 - Email your comments
 - july.jimenez@dot.state.fl.us
 - Comments and questions can be submitted at any time during the course of the study
 - Submit by Friday, July 8, 2016 to be included in the summary documents.
- Website
 - www.midwayrd.com
- Request a small group meeting with neighborhood or special interest group



The screenshot displays the 'COMMENT FORM' for the Midway Road Project Alternatives Workshop. The form is titled 'COMMENT FORM Alternatives Workshop' and provides details for the project: 'County Road (CR) 712 from Glades Cut Off Road to Selvitz Road in St. Lucie County, Florida', 'Financial Project Identification Number: 231440-3-22-01', 'ETDR Number: 14177', and 'www.MidwayRd.com'. The location is 'Havert L. Fenn Center, 2000 Virginia Avenue, Fort Pierce, Florida 34982' and the date is 'Tuesday, June 28, 2016 from 6 p.m. to 7:30 p.m.'.

The website header includes the FDOT logo and 'Florida Department of TRANSPORTATION'. The main content area is titled 'Midway Road Project Development and Environment (PD&E) Study'. It features a 'District Office' section for Geiry O'Reilly, District Four Secretary, located at 3400 W Commercial Blvd, Fort Lauderdale, FL 33309, with contact information: Tel: 954-777-4091, Fax: 954-777-4191. There are also links for 'Additional Contacts' and 'Staff Directory'.

The 'Study Resources' section lists: 'About the Study', 'Documents & Publications', 'Email Updates', 'FAQs', 'Photos', 'Public Notices', 'Schedule', and 'More'. The 'Welcome' section states: 'The Florida Department of Transportation (FDOT) District Four is conducting a Project Development and Environment (PD&E) study of a 1.6 mile segment of Midway Road/CR 712 from Glades Cut Off Road to Selvitz Road in St. Lucie County. The project limits are shown on the location map below. The study evaluates widening the existing two-lane road to a four-lane divided road to handle future expected traffic. The study also considers ways to improve safety, and allow opportunities for pedestrian, bicycle, and transit facilities. Click on the various pages of this website for information about the PD&E study process, future public involvement meetings, the project schedule, and information on how to contact FDOT's project manager.' A 'Study At-A-Glance' link is also present.



FDOT Project Manager:

July Jimenez, P.E.

Florida Department of Transportation

District Four

3400 West Commercial Blvd.

Fort Lauderdale, Florida 33309

(954) 777-4415

july.jimenez@dot.state.fl.us

Public Information (Toll-Free): 1-866-336-8435

www.midwayrd.com

Review Project Displays

MIDWAY ROAD



The presentation will replay shortly
Alternatives Public Workshop

Midway Road/County Road 712 Project Development and Environment Study from Glades Cut Off Road to Selvitz Road

St. Lucie County

FPID: 231440-3-22-01

ETDM: 14177

June 28, 2016

